

RT 9000
Partyline Subscriber
Alarm Polling

Dec. 08, 2000

RF-Tel Communications Ltd

Partyline Subscriber Polling Alarm:

General: The Central Office unit (C.O.) can poll up to eight (8) Partyline Subscribers. Every three hours the C.O. polls the Subscribers of the system in a serial fashion by sending a poll request starting with the last Subscriber. If the Subscriber polled does not respond, the C.O. will keep trying for up to 6.8 seconds before it continues to poll the next Subscriber. The C.O. unit is equipped with an alarm board that provides up to eight (8) dry relay contacts to indicate which Subscriber in the system does not respond to a poll.

A Subscriber that does not respond causes a corresponding relay of the alarm board to energize. The dry contacts are available at the DB15 connector at the rear of the unit.

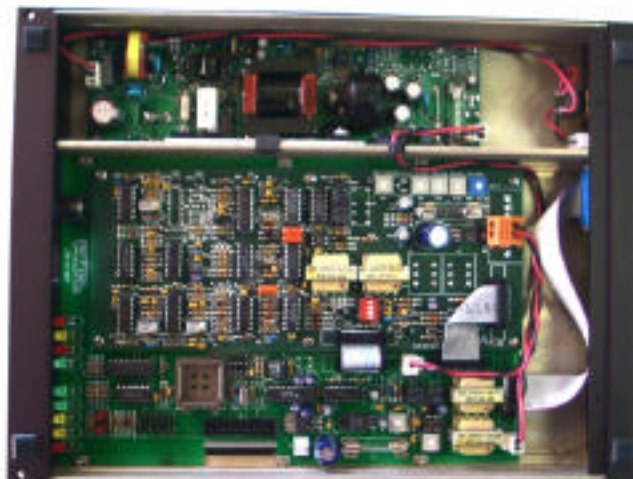
Operation:

There are three ways a poll is initiated.

- 1) Automatic poll initiated by the C.O. every three hours
- 2) A poll is initiated every time the C.O. is switched on
- 3) A poll is initiated after the second ring if a Sub, that is being called from the landline does not answer the call.

Initial testing of the System:

With all Subscribers installed and operational, turn on the C.O and observe that, after a few seconds of initialization, the C.O transmitter is turning on and a poll request is being transmitted. If all 5 Subscribers on the system are responding, the polling sequence will last only approx. 3 seconds. If the polling takes significantly longer, it is an indication that one or more Subscribers did not respond and the alarm board will indicate which Subscriber failed. Subscriber response is also indicated by the COR light briefly lighting up each time a Subscriber responds.



Programming:

General:

The system can be programmed via the setup program to include only those subscribers that are to be polled. Each Subscriber has a unique address programmed via the setup software. The C.O. is programmed with a list of each Subscriber to be polled. Polling takes place once every 3 hours. The time it takes to poll a Subscriber is approx. 700ms for a total poll time of 5.6 seconds if the maximum number of 8 Subscribers are polled. Polling a non responding Subscriber takes 6-7 seconds for a total poll time of approx. 48 seconds if the C.O. is setup to poll 8 Subscribers and none of them responds. To keep the polling time to a minimum, make sure that the C.O. polls only existing Subscribers.

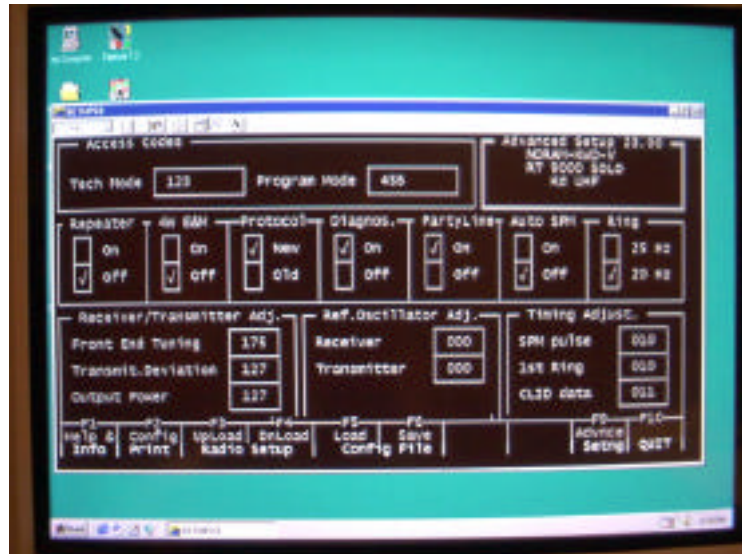
When programming new parameters from a computer via the setup software, make sure to **first upload the existing data** from the unit's EEPROM into the computer, otherwise all preset parameter such as power output, deviation, reference oscillators and frontend tuning are lost.

Setup Program: The latest setup software can be downloaded from the RF-Tel web-site <rftel.com>

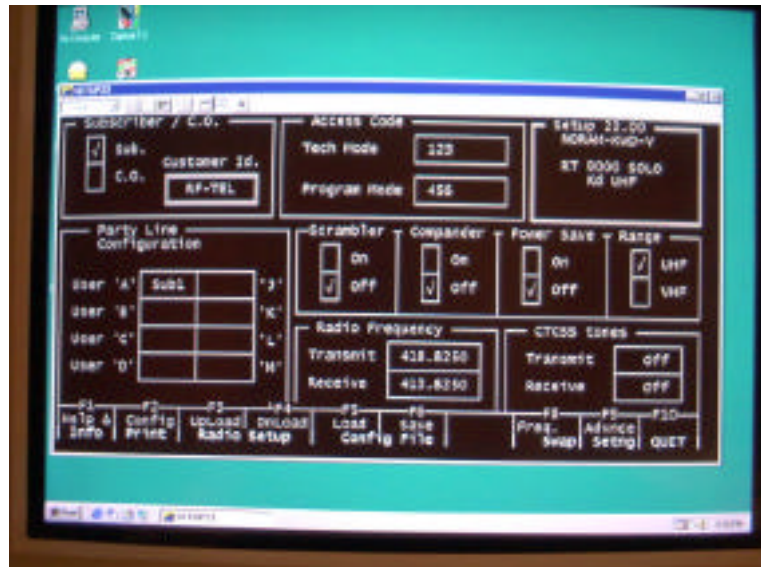
Uploading: To upload existing radio parameters from the EEPROM to the computer proceed as follows: With the radio turned off, on the computer press F3 and then F7. Now turn on the radio. Uploading progress can be monitored on the computer screen. When the display returns to the setup page uploading is completed.

Subscriber setup:

- 4) On the Setup program select page 2 with function key F9.
- 5) Activate 'Diagnostics' and 'Partyline' and 'New protocol'.



- 6) Return to page 1 with function key F8. Note that the Partyline section has changed from 3 to 8 fields.
- 7) Enter a station identifier number (1 to 4 digits) in the corresponding field for the Subscriber being programmed.
- 8) Make sure that the other 7 fields of the partyline section are empty.
- 9) Download the new information by turning off the radio, then press function keys F4 and F6 and then turn on the radio.



C.O. setup:

- 10) On the Setup program select page 2 with function key F9.
- 11) Activate 'Diagnostics' and 'Partyline' and 'New protocol'.
- 12) Return to page 1 with function key F8. Note that the Partyline section has changed from 3 to 8 fields. Enter a station identifier number (1 to 4 digits) in the corresponding fields for all the Partyline Subscribers of the system that should be polled.
- 13) Make sure that the fields for non-existing Subscribers are empty.
- 14) Download the new information by turning off the radio, then press function keys F4 and F6 and then turn on the radio.

